

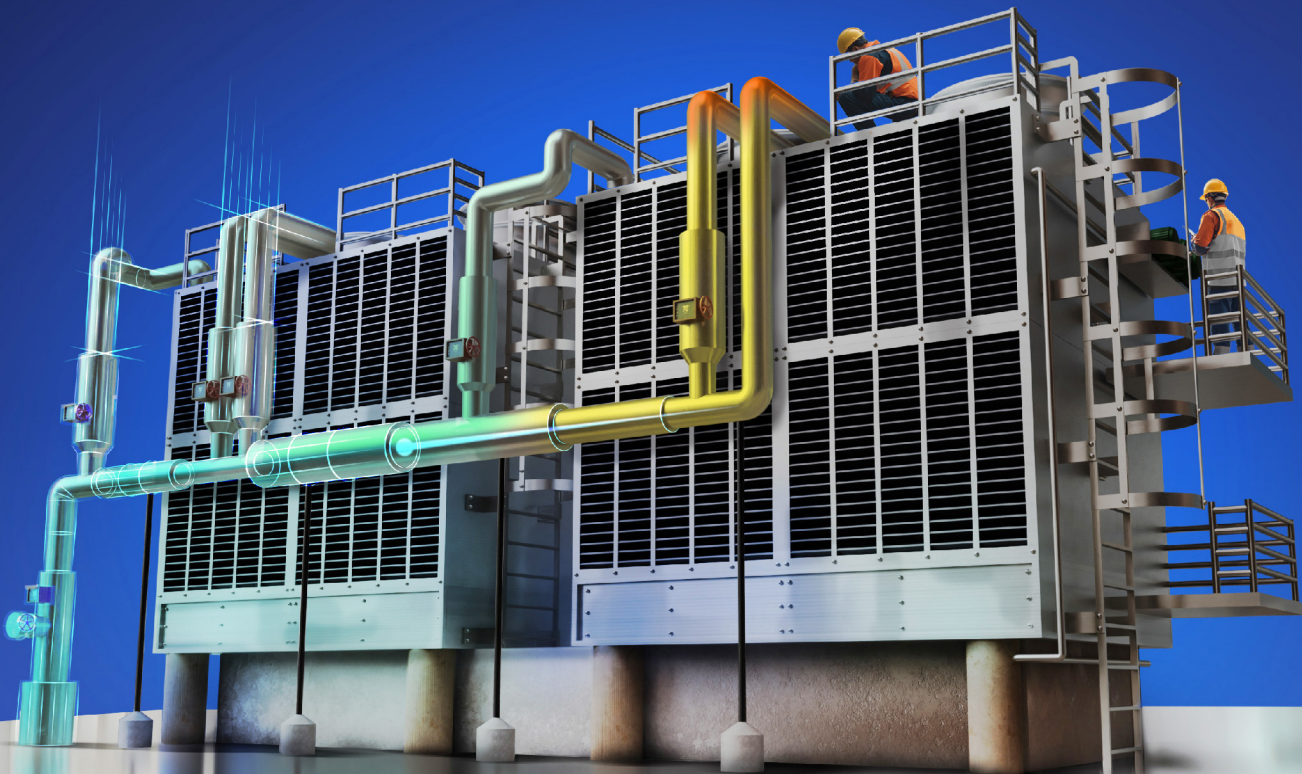
# \$260K/hour

downtime risked by unclear  
maintenance strategy

---

But

**70%** companies  
unaware this



Aden

The background of the slide features a large industrial facility, possibly a power plant or refinery, with complex piping, valves, and large cooling towers. The scene is set against a clear blue sky. The Aden logo is in the top left corner, and the main title 'TAM - Technical Asset Management' is prominently displayed in the upper left quadrant. Below the title, a subtitle 'CRITICAL ASSETS & EQUIPMENT PERFORMANCE' is highlighted with an orange bar. The central part of the slide contains four white boxes, each representing a key benefit of the service. The bottom section is divided into two parts: 'Technical services done right' with a descriptive paragraph and a list of achievements, and 'Customized models for all needs' with a list of service offerings and a detailed list of maintenance strategies. The overall design is professional and modern, using a color palette of blue, orange, and white.

# Aden

## TAM - Technical Asset Management

CRITICAL ASSETS & EQUIPMENT PERFORMANCE

### Your technical asset partner for:

Sustainability  
Regulatory  
compliance

Reliability  
Business  
continuity

Profitability  
Financial  
performance

Competitiveness  
Integrated  
resource efficiency

### Technical services done right

**We are TAM** – Technical Asset Management. We live and breathe asset performance, and work to highest international & environmental standards. We come to every site armed with experience; a full house and scope of expertise; and a powerful data platforms enabling us to take precise and proactive action, in line **with your sustainability targets**, and the potential of your most critical assets.

- ▶ 25+ Years of results
- ▶ Management in Asia, for Asia
- ▶ Compliance and transparency
- ▶ Digitalized by default

### Customized models for all needs

- ▶ 24-hours hotline
- ▶ On-site maintenance team
- ▶ Fly-in teams
- ▶ Remote & AR support
- ▶ Subcontractor management

#### An optimized mix of maintenance strategies

- ▶ Predictive maintenance
- ▶ Preventive maintenance
- ▶ Corrective maintenance
- ▶ Regulatory compliance
- ▶ Energy monitoring
- ▶ Cost optimization solution
- ▶ Inspections



## HOW WE DELIVER

# Asset-centric maintenance foundations of excellence

Every facility depends on its assets. Depend on us to keep yours at peak performance and optimized cost.

## Five core principals

that drive our working methodology and deliver lifetime results for TAM clients

Pillar 1	Pillar 2	Pillar 3	Pillar 4	Pillar 5
Define business objectives	Map and register each asset & its risk	Build a strong maintenance plan	Technology-enabled execution control	Optimization and analytics

## Operational excellence & best practices

### People

Our principle is CCTP: clever, confident, trained & prepared.

### Processes

We enforce and digitally track all TAM standards, SOP, and systemic audits.

## Resulting in

### Compliance

Central data platform Automated tracking Alignment with regulatory requirements

### Business continuity

Risk control via predictive & preventive maintenance  
EHS performance  
Reduced downtime

### Integrated resource efficiency

Energy efficiency  
Maintenance forecasting  
Dynamic work allocation

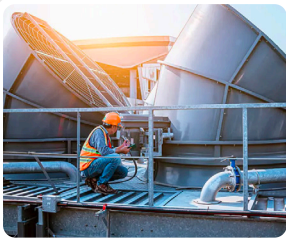
### Financial & ESG performance

Capex-opex balance  
Prolonged asset lifetime  
Automated ESG data



# Optimize your assets & equipment TCO

## Performance boost for critical systems



HVAC & exhaust  
systems



Heating & cooling  
systems



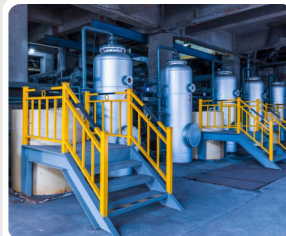
Compressed air,  
mechanical & hydraulics



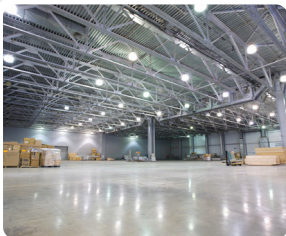
Electrical & high-voltage  
(HV)



Fire-fighting  
systems



Water & solid  
waste systems



Lighting & earthing  
systems



Building, elevators  
& kitchen



Building automation, CMMS  
& management

Systems we optimize  
empowering your  
better business  
performance.

Scan QR code to  
learn more

