



# Resilient & sustainable asset management

Mining | Oil & Gas | Infrastructure



- 68% EFFICIENT
- 98% ECO-FRIENDLY
- 15% BUILD MODELS

SOURCES  
Energy usage

86%

HUMIDITY

40.64 rH %

IN SUPPLY

50.49 L/m²

WIND PAN

20 MWh/day





# Digital before day one

## Resilient for a lifetime

### Advanced asset management for camps in remote locations

Aden Remote & Off-Grid ensures that any camp, in any location, can be designed, built and managed to international standards of efficiency and reliability; sustainability; safety and comfort.

Leveraging the full resources and experience of our parent company Aden Group, we work with international clientele around the world to deliver camps at the top tier of innovation and performance.

### Global network, experience & ecosystem

---

Since 1999, we have managed complex camp projects, leveraging in-house and partner expertise in tech, logistics, energy and environment on behalf of our clients.

### Financial agility from investment to turn-key ops

---

We finance, build and run your camp on a BOOT model, covering the full capex needs and providing turn-key operational solutions

### Digitalized engineering & construction efficiency

---

We commit to full digitalization from design through long-term operation, ensuring lifetime data transparency, collaboration between all project collaborators and shorter timelines

### Lifetime management for best TCO & climate resilience

---

Using BIM & digital twin, lock in CO2 reduction while ensuring your camp's assets are efficient and high-performing, even under increasing environmental pressure



# Total capabilities for the built environment

Aden Group has evolved to meet the growing needs of large & complex projects

For over 25 years, Aden Group has learned from its clients and experience in operations to develop a portfolio that works in harmony to meet the growing need for better building data, performance and sustainability.

We began in facilities, and took our first remote camp project in 1999.

● **Facilities & camp management**  
1997

Launch energy division to invest, build and operate client energy & decarbonization projects.

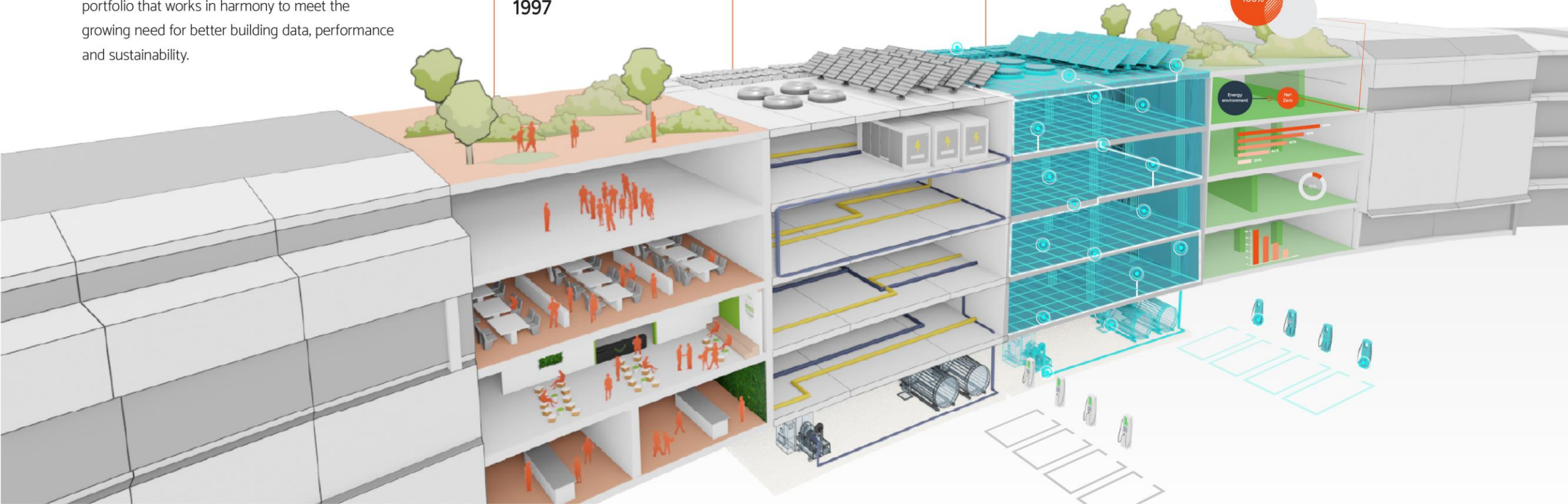
● **Clean-energy transitions**  
2015

Based on experience in facilities & energy, we develop Akila, a single source of truth

● **Digital twin platform**  
2018

Today, we manage and optimize the whole building lifecycle, focused on compliance

● **Net-zero & ESG partnership**  
Today



# Aden Group core portfolio

Our core businesses are wholly owned and managed by Aden Group, working together to offer the most complete operational and environmental optimization for our partners in business and government.

Aden  
services

## Facilities & camps

- › Industrial technical services
- › Building technical services
- › Facility management
- › Food service

 Akila

## Data & engineering

- › ESG digital twin platform
- › Portfolio management
- › BIM, engineering & simulation
- › Carbon lifecycle assessment

Aden  
energies

## Energy

- › Micro-grid & renewables
- › EV charging management
- › Virtual power plant (PP)
- › Off-site fund **PointZero**

nxpark

## Real estate

- › Location, leasing & compliance
- › Digitalized design & construction
- › Turn-key operations
- › ESG and sustainability data





## Complex projects & infrastructure

No matter the distance or difficulty

Aden Remote & Off-Grid is dedicated to asset management for large & complex projects in challenging locations, leveraging the full resources and innovations of the Aden Group portfolio.

- › **Accountability** as direct owner of your facility
- › **Financial agility** BOOT model to cover all CapEx
- › **Turn-key solutions** for facility management, technical services, energy, utilities & logistics
- › **Energy transition** renewables, storage & EV charge
- › **Climate resilience** secured digital engineering
- › **Data transparency** with automated ESG reporting & sustainability/performance analytics dashboarding

**25**

Years

**80+**

Projects led

**23**

Countries

**10M**

Sqm  
digitalized

**80K**

Personnel  
supported daily

## Remote & Off-grid

# A history of results with a global reach

From our earliest days, Aden has been managing Remote & Off-Grid projects. With a footprint extending from Indonesian islands to Latin America, we are reinforced by deep project experience and logistics networks that allow us to open and operate anywhere in the world.

## Project History

### Central Asia & Middle East

Kazakhstan  
Mongolia  
Afghanistan  
Saudi Arabia  
Qatar  
Kyrgyzstan  
Iraq

### East Asia & ASEAN

China  
Laos  
Indonesia  
Philippines  
Vietnam  
Malaysia

### Africa

Burkina Faso  
CAR  
DR Congo  
Eritrea  
Guinea  
Liberia  
Nigeria  
Sierra Leone  
Somalia  
Tanzania

### Other projects

Maldives  
Panama





# Design, build & operate to international standards

Proven track record of achieving client  
certification & net-zero targets

We leverage our Group expertise and technologies for engineering, performance tracking and carbon-environmental forecasting to streamline clients' roadmap for building environmental certification, net-zero transition and ESG reporting

## Accelerating the client sustainability roadmap



## Committed & certified as Aden Group



# BOOT financing – secure lifetime agility & accountability

We take the lead to secure asset investment and management, minimizing your capex, financial-operational risk and timelines.

---

## Lifetime optimization

With BOOT, Aden takes ownership of financing, designing, building and operating your camp, including the facilities, utilities & critical assets. This means you shift the complex risks, costs and management to Aden, who serves as your single POC and asset manager.

Being involved at all stages, Aden ensures accountability for your project's lifetime success and efficiency.

## Build > Own > Operate > Transfer

- > Lower infrastructure start up costs & rapid scaling of operations
- > Leverage global financial network, and track record of strong ties with local institutions
- > Innovative funding/financing and pre-paid OpEx costs built into CapEx costs
- > Lower lifetime TCO, with higher lifetime secured through end-to-end use of platform

## Working with global and local institutions

### Global network

As a global group active in 40 countries, we enjoy strong financial backing from major institutions in the EU and APAC, leveraging this to support full asset investment in your project.

### Local institutions

In regions where international investment is more challenging, we work with local financial partners and maintain our own commitment across your project's lifetime.



# Adaptation & action on climate change

## Our guiding principles

Climate change and intensification of weather patterns is now a hard reality. Every building & portfolio owner must find ways to manage unprecedented pressures that will not be going away.

Aden Remote & Off-Grid works with you to achieve the needed change, in regions where climate pressure on buildings and infrastructure is felt most. Our approach is founded on twin objectives

Climate  
adaptation partner



### Climate resilience

Designing for lifetime asset performance efficiency in the face of major challenges driven by climate change

#### The new pressures on camps

- > Heat
- > Humidity
- > Water scarcity
- > Extreme weather
- > Higher operations cost
- > Higher insurance cost

#### Key infrastructure & capabilities

- > Digital engineering
- > Digital twin
- > New materials
- > AI based simulation
- > Performance tracking & optimization

### Climate mitigation

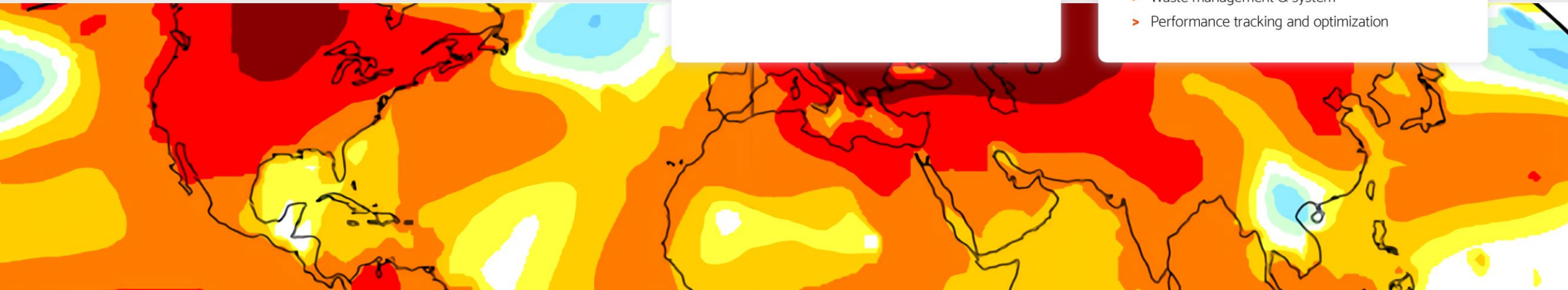
Designing & operating for minimum negative carbon-GHG emissions in line with global net-zero targets

#### Areas of focus

- > Energy
- > Water
- > Waste
- > Supply chain

#### Key infrastructure & capabilities

- > Renewable energy microgrid, storage and VPP
- > Carbon lifecycle assessment
- > Water recycling, harvesting and processing
- > Waste management & system
- > Performance tracking and optimization





# Eco-camp solutions smart, sustainable, ready to go

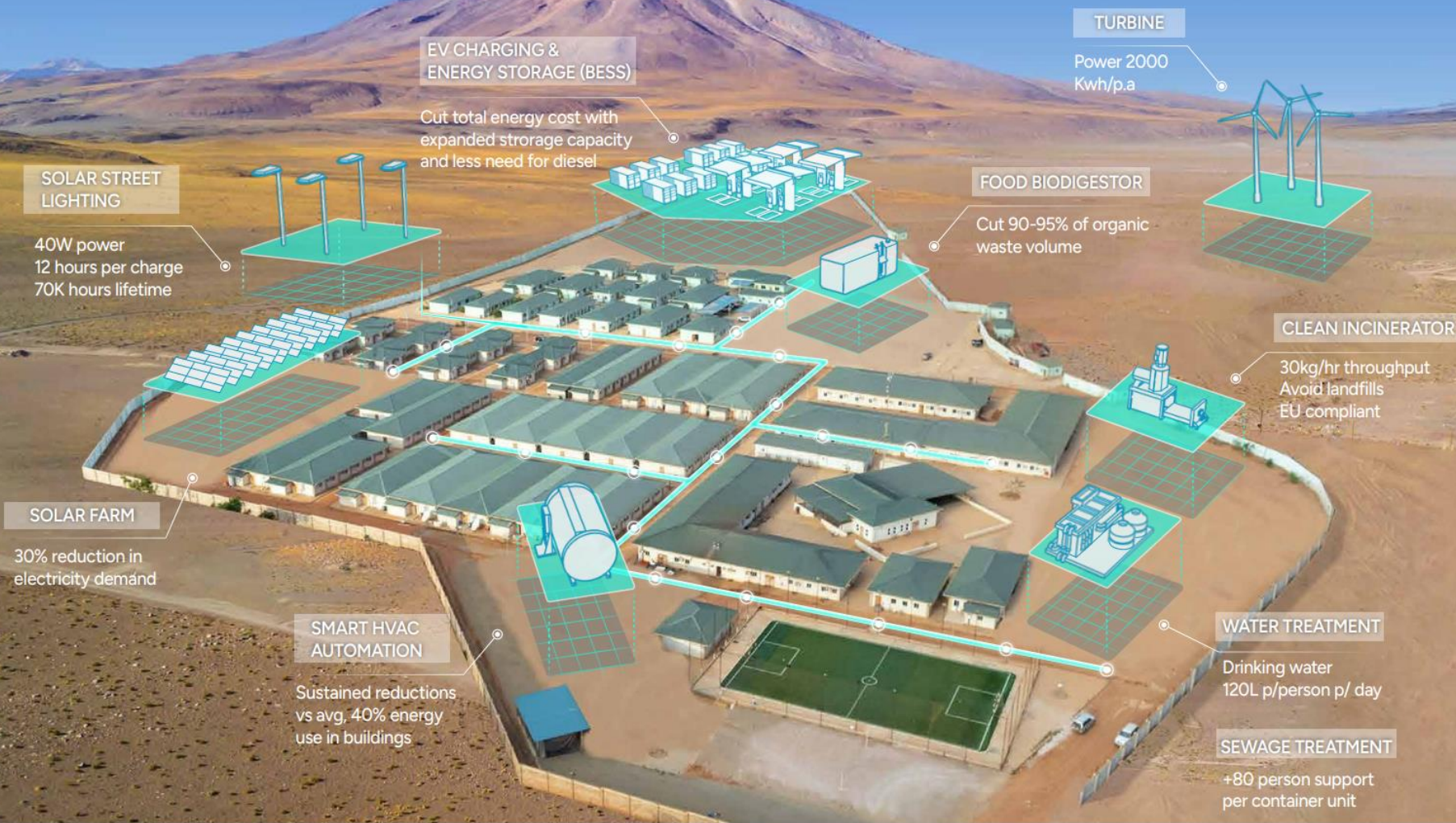
Cost & impact optimization for energy, water & waste

Based on client specifications, we offer a range of plug-and-play infrastructure that can be deployed for sustainability and circular economy gains from even small base camp to large and complex sites.

## Cost control & off-grid autonomy

Besides the ESG and environmental impact improvements, our eco-camp model future proofs your camp to be resilient against rising energy-utilities prices & supply chain disruption.

- **Energy** - Micro-grid and expanded storage capacity mean you can spend less shipping in diesel, while accelerating fleet & equipment electrification.
- **Water** - Control costs from water loss and shipment with water recycling & repurposing towards functional uses in site O&M.
- **Waste** - Major reductions in waste removal needs and landfill, with opportunities to track and transform waste for useful ends such as fertilizers.





# Facilities management service at the **top tier**

We supply and operate camps with international standards, and a focus on people & community.

Aden Remote & Off-grid has enjoyed three decades of uninterrupted services by building on base of operational expertise, well calibrated supply chain and a philosophy of partnership with the communities that support us.



## Logistics and supply chain at scale

Anywhere in the world, we ensure complete options and cost-optimized supplies of goods including food, PPE, spare parts/MRO, uniforms, chemicals and more.



## Local purchasing policies

We balance our global reach with local investment. We encourage local purchase when feasible, supporting local economies, shortening supply chains and cutting Co2.



## Opening opportunity with local hiring & development

Every Remote & Off-Grid site is majority locally staffed, often as high as 90-95%. By investing in people & opportunity we secure deeper ties and good will on and off-site.



## Full facility management & on-site comfort

We provide complete camp facility management, tailored to local preferences, but always insisting on international standards of HSE, training, management and transparency.



# Operational optimization at every level

Aden was built on operational excellence. Our offer for remote & off-grid camps covers needs at every level - facility management to data-environmental infrastructure to community relations and supply chain logistics.

## Performance analytics

System | Site | Portfolio

- › ESG & decarbonization
- › Energy-financial savings
- › Asset maintenance
- › Waste management

## Facilities management

Dormitory | Offices | Warehouse | Grounds

- › Food service
- › Industrial laundry
- › Events & recreation
- › Security & visitor management
- › Hygiene & cleaning
- › Gardening & pest control

## Technical asset management

- › Predictive maintenance
- › Technical projects & upgrades
- › MRO & spare parts
- › Compressed air management

## CSR

- › Local purchasing
- › Workshops & education
- › Agriculture & reforestation
- › Local hiring
- › Building & infrastructure



## Design engineering & construction

- › BIM-based design
- › PMO & construction
- › Carbon lifecycle assessment
- › Environmental engineering

## Renewables, micro-grid & utilities

Solar | Wind | Geothermal | Water | Gas | Generators

- › Capex financing
- › Sourcing
- › Project management
- › Long-term O&M
- › Data & optimization

## Fleet management

Heavy duty | Shuttle | 4X4

- › Financing & leasing
- › Access control & licensing
- › Digital monitoring
- › Parking management

## Supply chain

Local | National | Global

- › Bulk food & drink
- › PPE & uniforms
- › Chemicals
- › Consumer products



# CSR Partnership – Mongolia

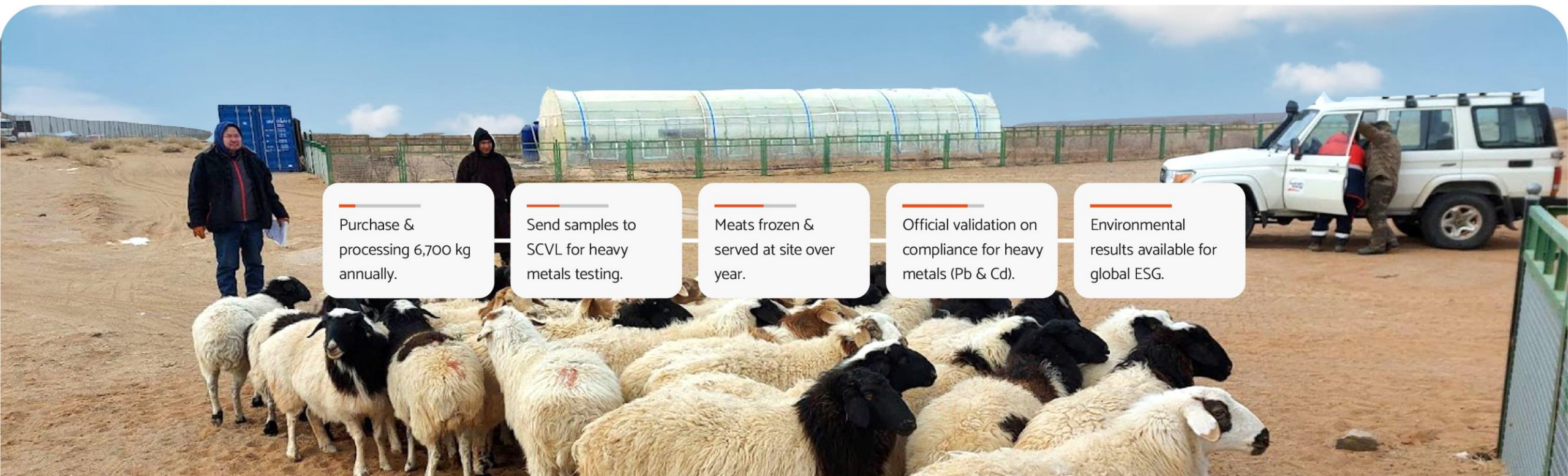
## Herders project

Since 2014, we have been working with the community and Orano to support local purchase and accelerate environmental impact testing



### Advancing local & global objectives

- Validate the environmental sustainability of Orano's operations in the area.
- Build sustainable relationship between the extractive sector, local food producers & supporting companies.
- Organize & establish meat value chain & distribution with a lower Scope 3 impact
- Increase livestock productivity with direct income moving to farmers' business & communities.
- Ensure site has high-quality, locally sourced food, procured with best international practices.
- Meet international ISO 22000:2005, HACCP & MNS codes (2456:2009, 5023: 2001, 2457: 2009).



Purchase & processing 6,700 kg annually.

Send samples to SCVL for heavy metals testing.

Meats frozen & served at site over year.

Official validation on compliance for heavy metals (Pb & Cd).

Environmental results available for global ESG.





# We cannot afford construction as usual

The world's biggest industry is also one of the least efficient – and least digital.

In 2022, 40 billion dollars were lost to construction inefficiency, just in the US. Meanwhile, each week the world adds the equivalent of Paris city in new construction, but less than 1% of this is built to the net-zero standard, or uses an offsite assembly model that allows for faster and more cost-effective replication of projects.

We know there is a better way, and we are making it happen by bringing full digitalization to the building lifecycle and ensuring top efficiency, transparency and sustainability before a single brick is laid.

When the industry fails to innovate, it's you who pays.

**80%**

Of projects go  
**overbudget**

**77%**

Of projects are  
completed **late**

**1%**

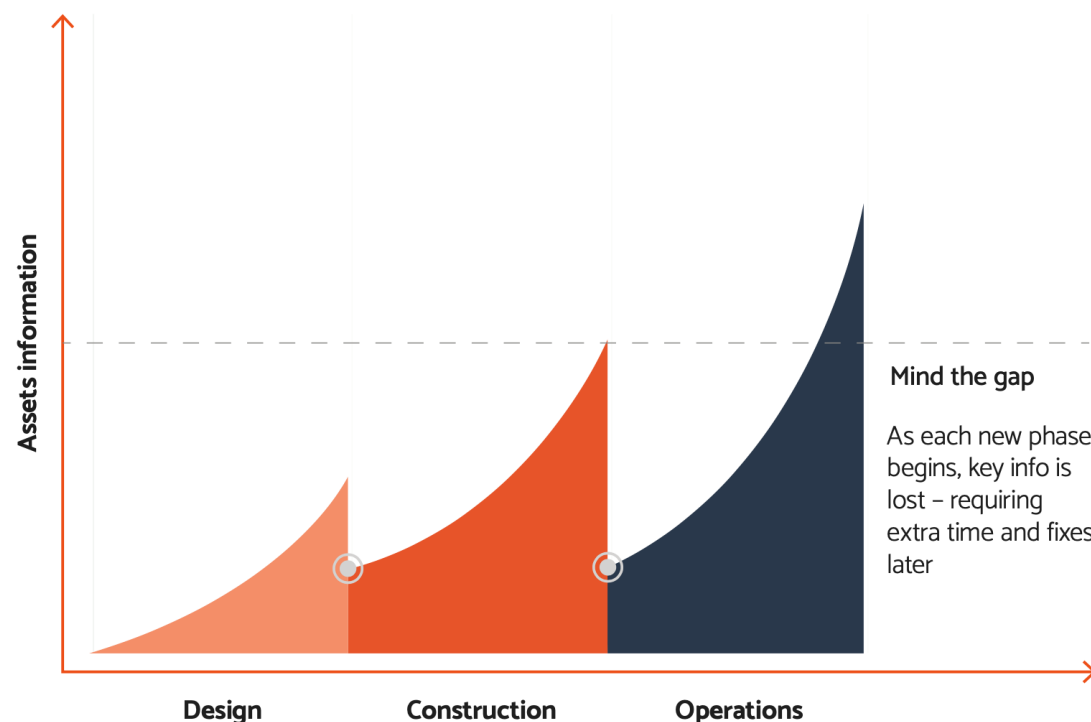
Productivity growth  
since 2000 is **flat**

# Stay in control as asset data grows

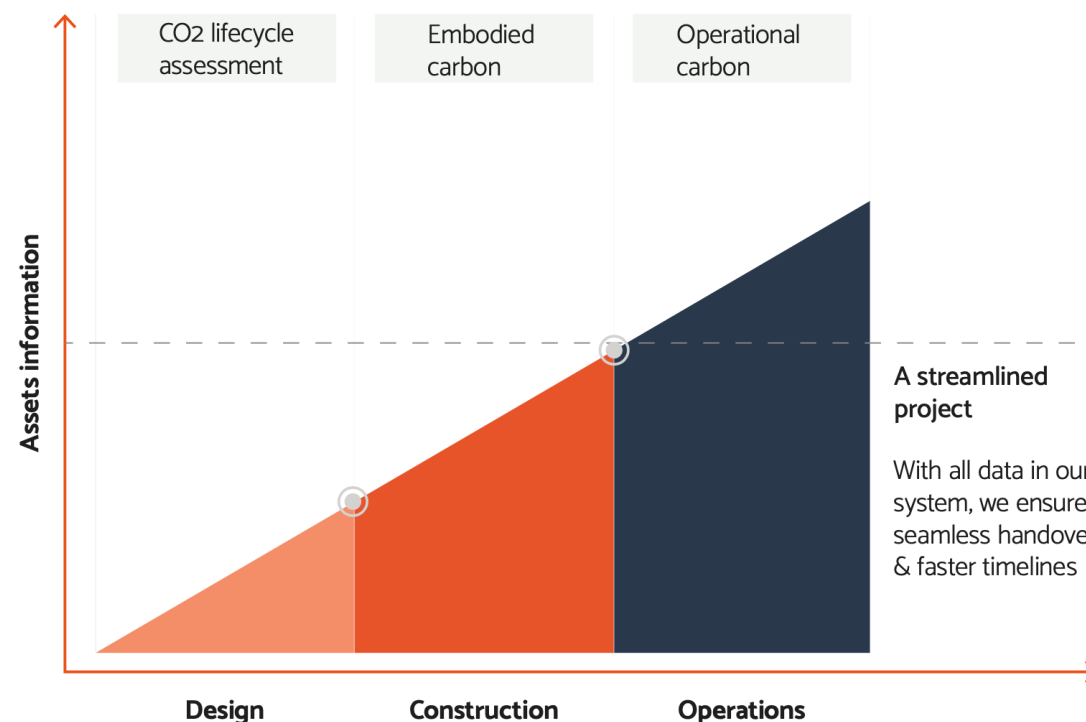
As your project advances, the volume of critical information only grows. Poor data handover quickly translates into work stoppages, accidents, cost and difficulty of proving building sustainability.

By linking the whole process digitally, we keep projects running smoothly even as making complexity rises, and make it a lifetime asset for sustainability and long-term O&M of your site.

## How projects have been performing



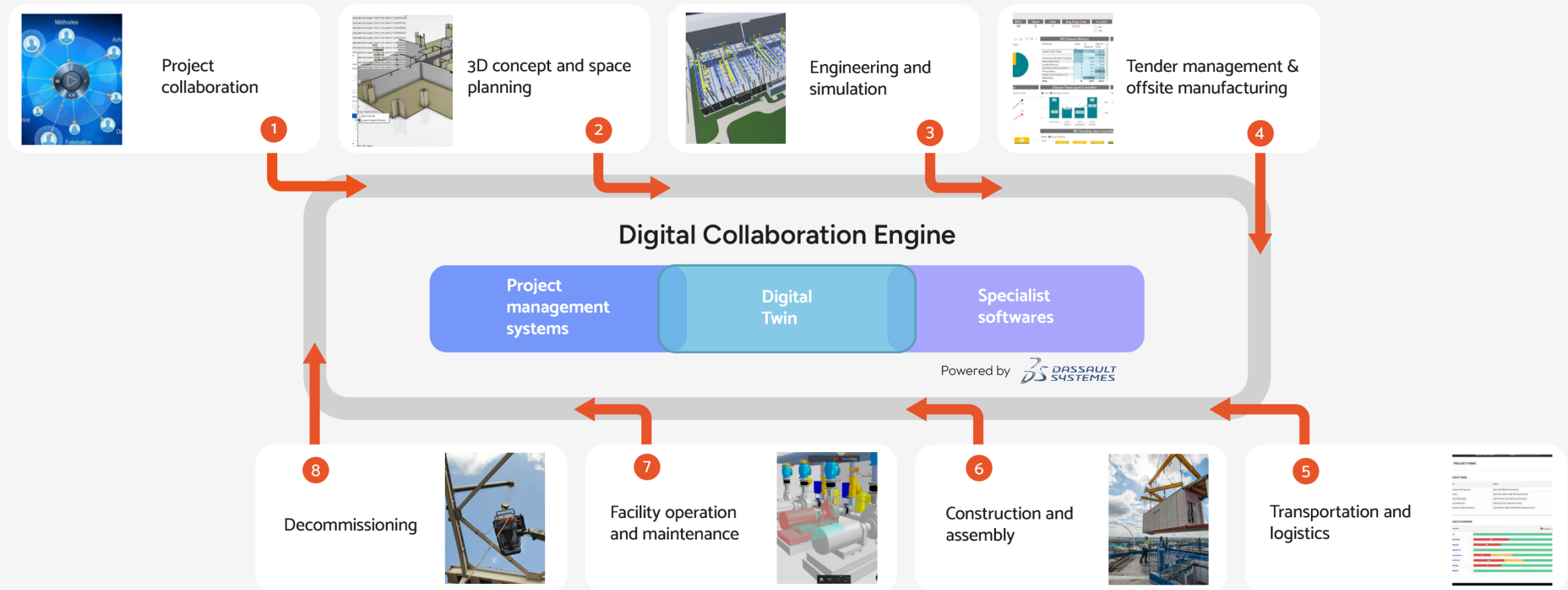
## How your projects can perform





# How we digitalize the full building lifecycle

Many companies only digitalize portions of their design, construction and operations. Aden knows better. We create a complete digital ecosystem capable of integrating best-in-class tech and building data from each stage. End result – properties capable of achieving unparalleled efficiency, resilience and decarbonized performance, all validated and enhanced by a continuous flow of hard data and operational insight.







# European Union Diplomatic Compound **EUDC Somalia**

## BOOT & Digitalization: Case Study

Since 2014, Aden is the EU's BOOT partner at its high-security compound in Mogadishu. Hosting **50+ staff** and high level **EU delegations**, we deliver a full solution for maximum resilience and security, while maintaining an international level of life service comfort and operations.

### Asset, facility & energy management

Since opening, the EUDC has operated solar PVs & energy storage, staff/diplomatic housing and work space; recreational areas: medical infrastructure, & advanced security.

### Digitalizing for sustainability & performance (2023)

We have applied our digital platform to the full camp, bringing data & optimization to the compound's energy, maintenance, security & life service operations.

### EU-level comfort Highest level security

The EUDC provides total security for staff & goods coming in and moving offsite. Hosting delegations at the level of national and military leadership, it operates facilities and housing at an equal level of comfort.

### Resilience plan 1M Euros in upgrades (2022)

In 2022, we committed to upgrading the EUDC's energy-asset efficiency, comfort, security and physical infrastructure. Working with technical and local partners, we completed the upgrade in 2023.



# Selected case studies



Uranium mining  
Mongolia



Copper mining  
Mongolia



Gold mining  
Kyrgyzstan



Mining camp  
Kazakhstan



Oil & Gas  
Kazakhstan



Petrochemical  
China



Telecoms  
Afghanistan



Oil & Gas  
Nigeria



Copper mining  
Panama



Iron ore  
Guinea



Mining camp  
DR Congo



Mining camp  
DR Congo



Bauxite mining  
Guinea



Petrochemical  
China



Diplomatic compound  
Somalia



Nickel mining  
Indonesia



Dam site  
Laos



Construction  
Vietnam



Refinery  
Vietnam



Iron ore  
Laos



Full island campus  
Maldives



**Engineered &  
operated for resilience**

[www.adengroup.com](http://www.adengroup.com)

